

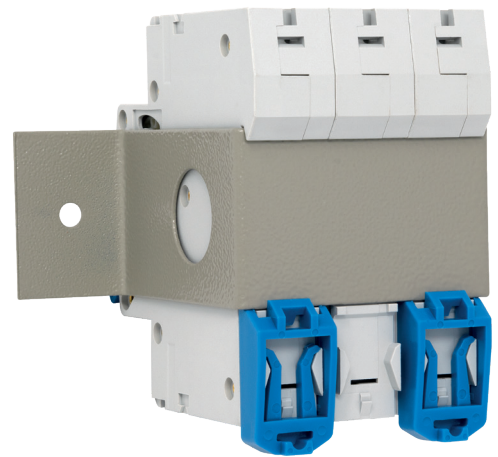
HtecFMA Front Mount Adaptors



HtecFMA Front Mount Adaptors allow easy conversion from rear DIN-Rail mounting to front panel mounting on our Htec range of 10kA MCBs.

The HtecFMA adapters are available in 1, 2 and 3 pole sizes and include mounting screws.

NOTE: Htec MCBs are NOT included



Order Codes

HtecFMA for 1 pole

HtecFMA1P

HtecFMA for 2 pole

HtecFMA2P

HtecFMA for 3 pole

HtecFMA3P